

YEAR

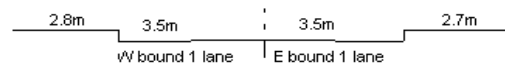
2014

LINK

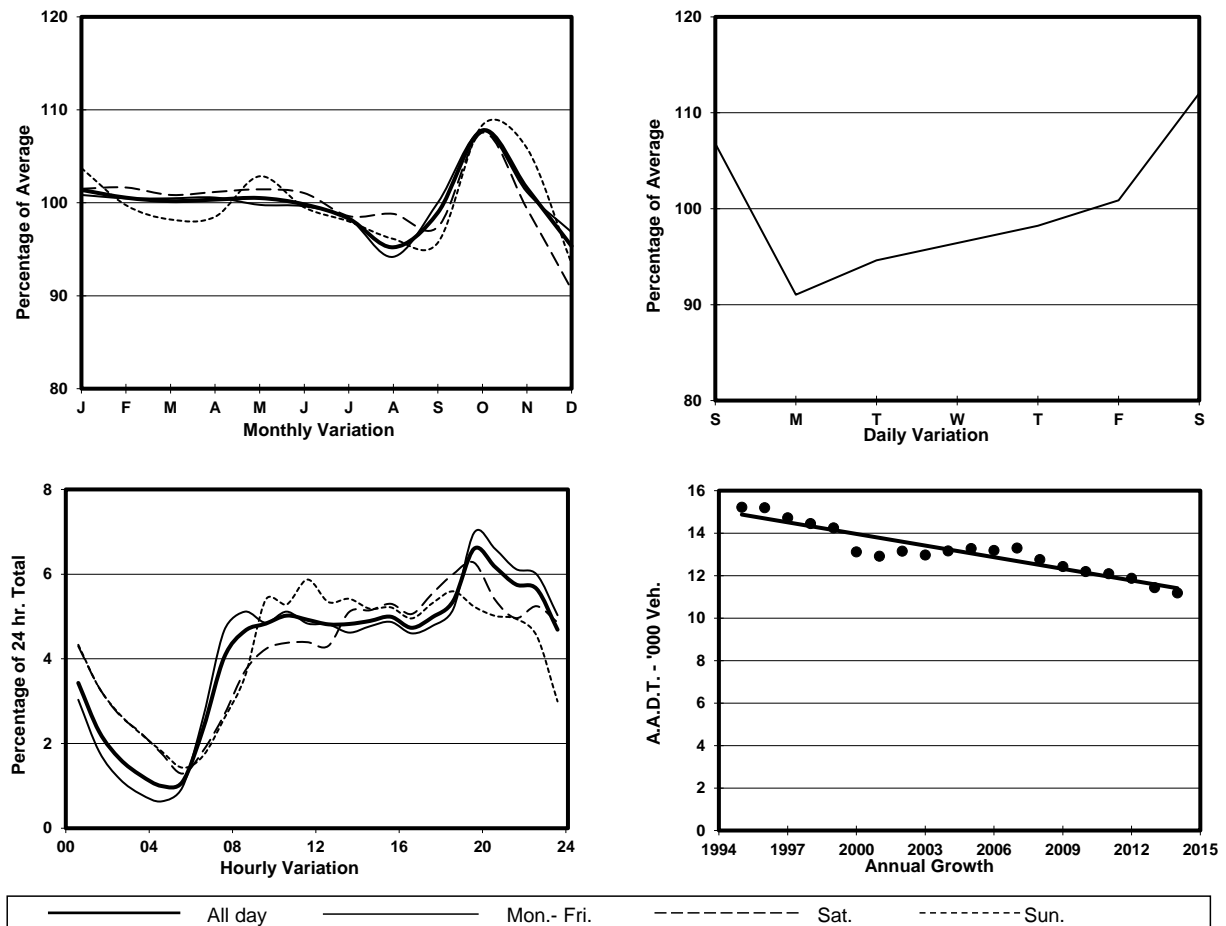
CAINE RD (from SEYMOUR RD to ABERDEEN ST)

CORE STATION
ROAD NETWORK
ROAD TYPE

1013
MAJOR
DISTRICT DISTRIBUTOR



1. TRAFFIC FLOW VARIATION AND GROWTH



2. TRAFFIC CHARACTERISTICS (BY DIRECTION)

Parameter	All - Day	Mon. - Fri.	Sat.	Sun.
EAST BOUND				
A.A.D.T.	8110	8050	8670	7600
R 12 / 24 - %	61.8	63.3	57.5	58.5
R 16 / 24 - %	83	85.2	77.8	77.4
AM Peak Hour	0900-1000	0800-0900	0900-1000	0900-1000
One-way flow at AM peak hour	430	460	440	380
T - % (AM)	-	-	-	-
PM Peak Hour	1800-1900	1800-1900	1800-1900	1800-1900
One-way flow at PM peak hour	460	460	500	420
T - % (PM)	-	-	-	-
Prop.of commercial vehicles - 16 hr.	-	-	-	-
WEST BOUND				
A.A.D.T.	3070	2670	3790	4290
R 12 / 24 - %	48.3	42.8	52.1	62
R 16 / 24 - %	80.3	80.2	77.6	83.1
AM Peak Hour	0700-0800	0700-0800	0700-0800	0900-1000
One-way flow at AM peak hour	110	110	90	260
T - % (AM)	-	-	-	-
PM Peak Hour	1600-1700	1600-1700	1700-1800	1800-1900
One-way flow at PM peak hour	140	110	250	250
T - % (PM)	-	-	-	-
Prop.of commercial vehicles - 16 hr.	-	-	-	-

3. OTHER INFORMATION AND COMMENT